

3Chi Bulk D6a10a

Sample ID: SA-10132021-4740
Batch: 211012-D6a10a
Type: In-Process Materials
Matrix: Concentrate - Distillate

Received: 10/13/2021
Completed: 10/18/2021

Client
3Chi
275 Medical Dr #857
Carmel, IN 46082
USA
Lic. #: 18_0235



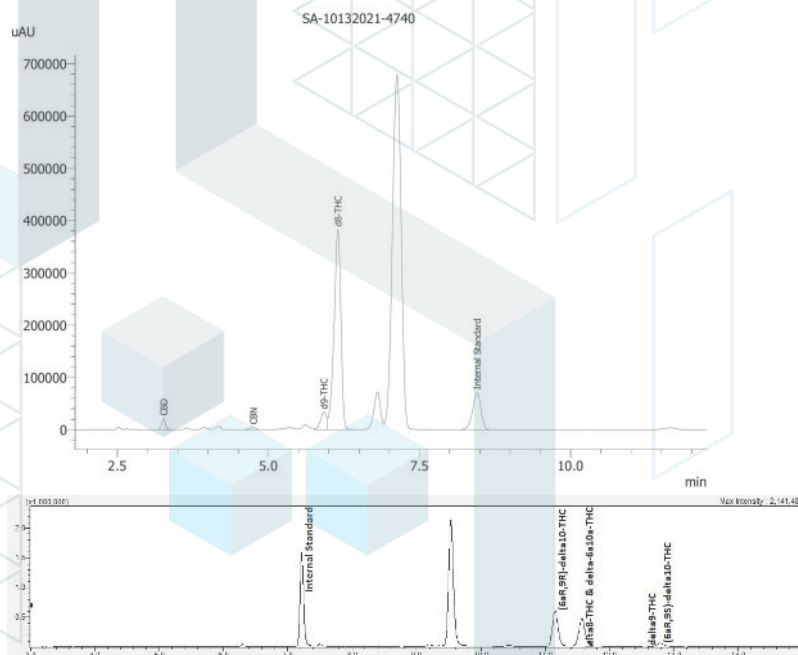
Summary

Test	Date Tested	Status
Cannabinoids	10/18/2021	Tested
Cannabinoids (Additional)	10/18/2021	Tested

Cannabinoids by HPLC-PDA and GC-MS/MS

0.289 %	3.63 %	4.93 %	Not Tested	Not Tested	Yes
Total Δ9-THC	Δ8-THC	Total Cannabinoids	Moisture Content	Foreign Matter	Internal Marker Recovered

Analyte	LOD (%)	LOQ (%)	Result (%)	Result (mg/g)
CBC	0.0095	0.0284	ND	ND
CBCA	0.0181	0.0543	ND	ND
CBCV	0.006	0.018	ND	ND
CBD	0.0081	0.0242	0.826	8.26
CBDA	0.0043	0.013	ND	ND
CBDV	0.0061	0.0182	ND	ND
CBDVA	0.0021	0.0063	ND	ND
CBG	0.0057	0.0172	ND	ND
CBGA	0.0049	0.0147	ND	ND
CBL	0.0112	0.0335	ND	ND
CBLA	0.0124	0.0371	ND	ND
CBN	0.0056	0.0169	0.181	1.81
CBNA	0.006	0.0181	ND	ND
Δ8-THC	0.0104	0.0312	3.63	36.3
Δ9-THC	0.0076	0.0227	0.289	2.89
Δ9-THCA	0.0084	0.0251	ND	ND
Δ9-THCV	0.0069	0.0206	ND	ND
Δ9-THCVA	0.0062	0.0186	ND	ND
Total Δ9-THC			0.289	2.89
Total CBD			0.826	8.26
Total			4.93	49.3



ND = Not Detected; NT = Not Tested; LOD = Limit of Detection; LOQ = Limit of Quantitation; RL = Reporting Limit; Δ = Delta; Total Δ9-THC = Δ9-THCA * 0.877 + Δ9-THC; Total CBD = CBDA * 0.877 + CBD;



10/18/2021

This product or substance has been tested by KCA Laboratories using validated testing methodologies and an ISO/IEC 17025:2017 accredited quality system. Values reported relate only to the product or substance tested. The reported result is based on a sample weight. Unless otherwise stated, results of tests performed on all quality control samples met criteria for acceptance established by KCA Laboratories. KCA Laboratories makes no claims as to the efficacy, safety or other risks associated with any detected or non-detected amounts of any substances reported herein. This Certificate of Analysis shall not be reproduced except in full, without the written approval of KCA Laboratories. KCA Laboratories can provide measurement uncertainty upon request.





KCA Laboratories
232 North Plaza Drive
Nicholasville, KY 40356

+1-833-KCA-LABS
<https://kcalabs.com>
KDA Lic.# P_0058

Certificate of Analysis

2 of 2

3Chi Bulk D6a10a

Sample ID: SA-10132021-4740
Batch: 211012-D6a10a
Type: In-Process Materials
Matrix: Concentrate - Distillate

Received: 10/13/2021
Completed: 10/18/2021

Client
3Chi
275 Medical Dr #857
Carmel, IN 46082
USA
Lic. #: 18_0235

Cannabinoids by HPLC-PDA, LC-MS/MS, and/or GC-MS/MS

Analyte	LOD (%)	LOQ (%)	Result (%)	Result (mg/g)
Δ 6a,10a-THC	0.0076	0.0227	22.7	227.0
(6aR,9S)- Δ 10-THC	0.0076	0.0227	2.43	24.3
(6aR,9R)- Δ 10-THC	0.0076	0.0227	25.2	252.0

ND = Not Detected; NT = Not Tested; LOD = Limit of Detection; LOQ = Limit of Quantitation; RL = Reporting Limit; Δ = Delta; Total Δ 9-THC = Δ 9-THCA * 0.877 + Δ 9-THC; Total CBD = CBDA * 0.877 + CBD;

10/18/2021

This product or substance has been tested by KCA Laboratories using validated testing methodologies and an ISO/IEC 17025:2017 accredited quality system. Values reported relate only to the product or substance tested. The reported result is based on a sample weight. Unless otherwise stated, results of tests performed on all quality control samples met criteria for acceptance established by KCA Laboratories. KCA Laboratories makes no claims as to the efficacy, safety or other risks associated with any detected or non-detected amounts of any substances reported herein. This Certificate of Analysis shall not be reproduced except in full, without the written approval of KCA Laboratories. KCA Laboratories can provide measurement uncertainty upon request.

